

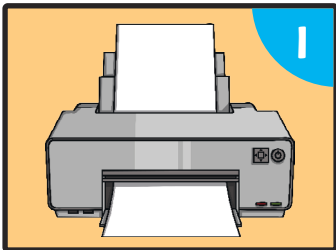
Toilet Roll Rooster

You will need:

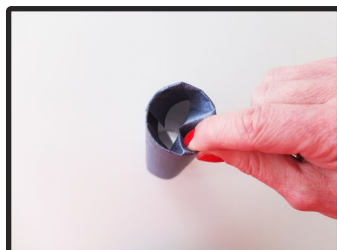
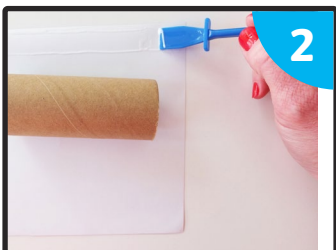
- Toilet paper roll
- Blue poster paint or wrapping paper
- Small pieces of coloured paper or card (optional)
- googly eyes (optional)
- Rooster Template
- Paintbrush
- White glue (such as PVA)
- Glue spreader or brush
- Scissors



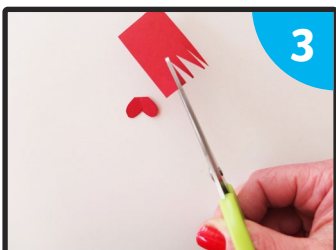
What To Do:



In preparation, print out the Rooster Template. Or if you feel confident copying the shapes and drawing your own, you can skip this step.



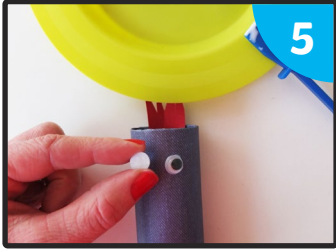
Paint the outside and the top part of the inside of the toilet paper roll blue. If you don't have paint, you can roll the toilet paper roll in wrapping paper and glue it in place, then tuck the edges of the paper inside the toilet paper roll.



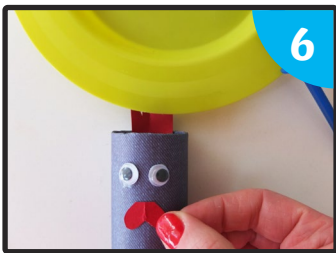
Carefully cut out the rooster's comb (for the top of its head) and its wattles (for under its beak). You can use these from the Rooster Template, or draw your own onto card and cut them out.



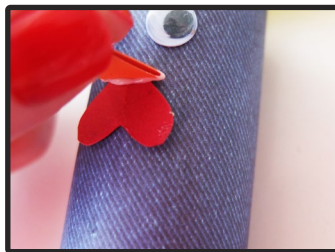
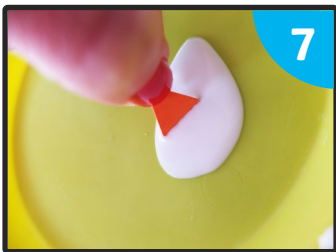
When the painted toilet paper roll is dry, glue the rooster's comb in place on the inside of the tube.



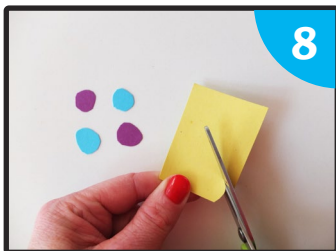
Stick the googly eyes on to the front of the tube, using glue. If you don't have googly eyes you can use the eyes from the Rooster Template.



Glue the wattles to the tube, underneath the eyes.



Carefully cut out the rooster's beak and fold in half. Put glue along the fold line and stick to the top of the wattles.



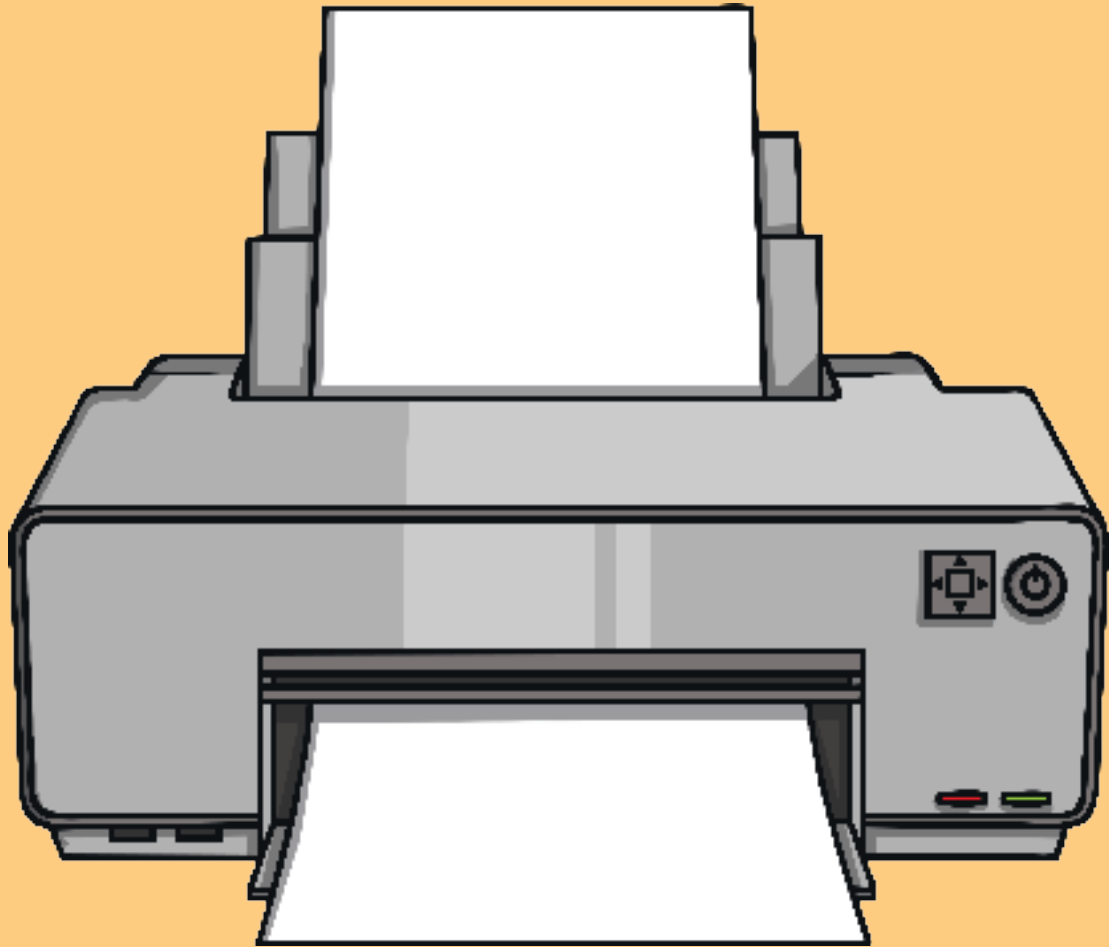
Finally, cut out circles of card, or use the feathers in the Rooster Template. Glue these on, starting from the bottom of the tube, working your way up to just underneath the rooster's wattles and beak.

Toilet Roll Rooster

You will need:

- Toilet paper roll
- Blue poster paint or wrapping paper
- Small pieces of coloured paper or card (optional)
- 2 googly eyes (optional)
- Rooster Template
- Paintbrush
- White glue (such as PVA)
- Glue spreader or brush
- Scissors





Step 1

In preparation, print out the Rooster Template. Or if you feel confident copying the shapes and drawing your own, you can skip this step.



Step 2

Paint the outside and the top part of the inside of the toilet paper roll blue. If you don't have paint, you can roll the toilet paper roll in wrapping paper and glue it in place, then tuck the edges of the paper inside the toilet paper roll.



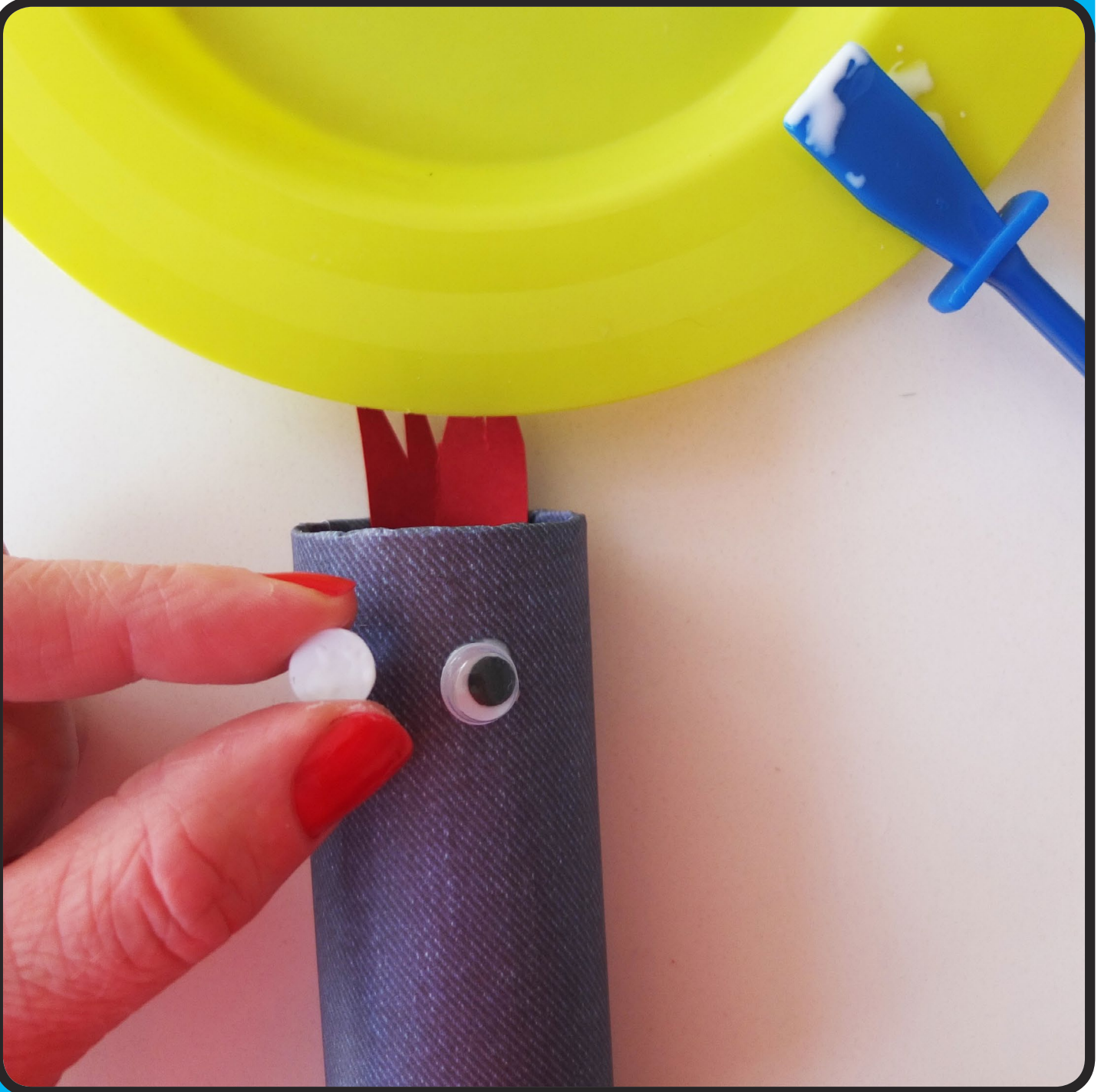
Step 3

Carefully cut out the rooster's comb (for the top of its head) and its wattles (for under its beak). You can use these from the Rooster Template, or draw your own onto card and cut them out.



Step 4

When the painted toilet paper roll is dry, glue the rooster's comb in place on the inside of the tube.



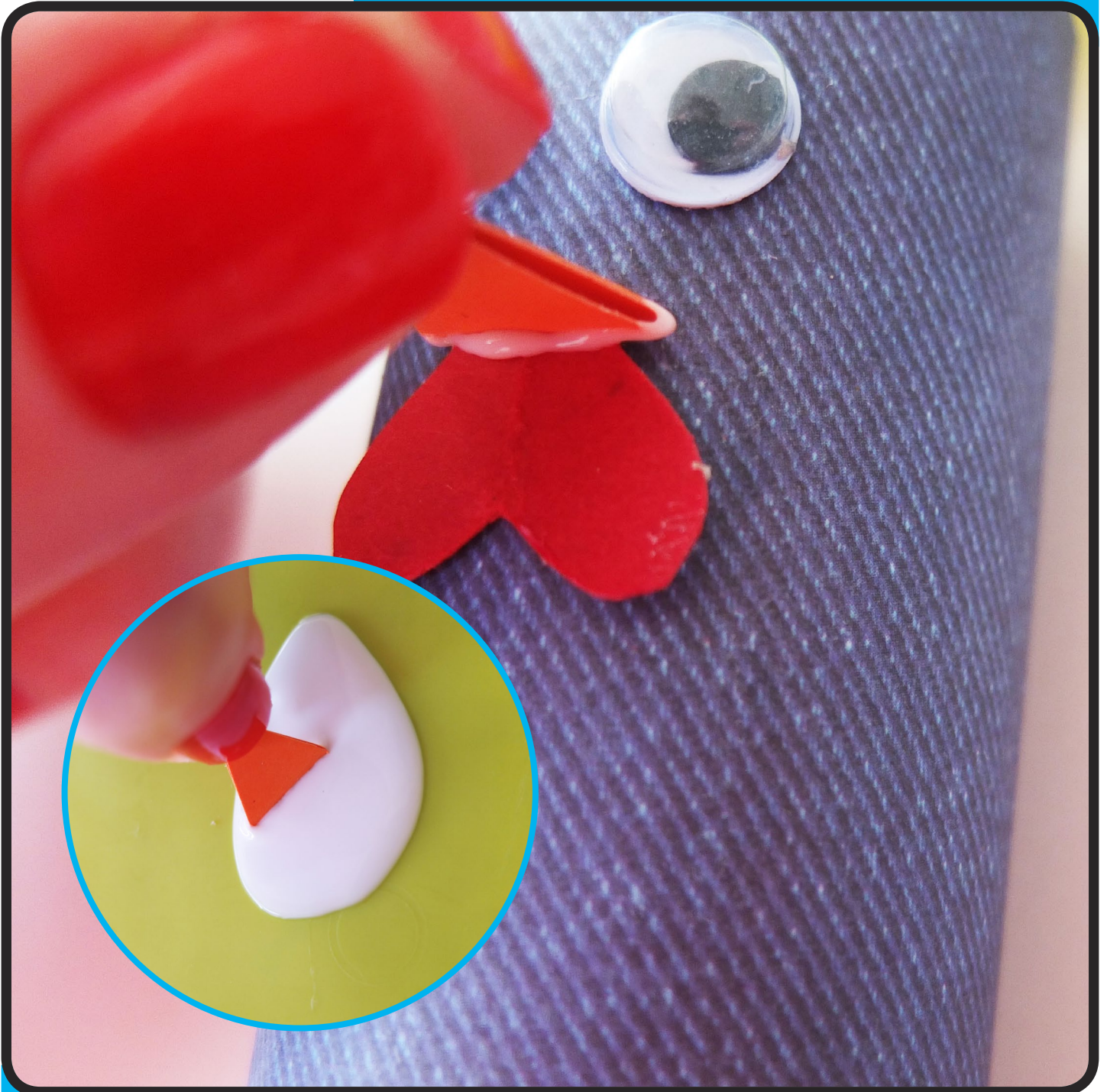
Step 5

Stick the googly eyes on to the front of the tube, using glue. If you don't have googly eyes you can use the eyes from the Rooster Template.



Step 6

Glue the wattles to the tube, underneath the eyes.



Step 7

Carefully cut out the rooster's beak and fold in half. Put glue along the fold line and stick to the top of the wattles.



Step 8

Finally, cut out circles of card, or use the feathers in the Rooster Template. Glue these on, starting from the bottom of the tube, working your way up to just underneath the rooster's wattles and beak.

